

Preci-Tips Precision Dispensing Tips Selector Guide



Standard Gauge

Phosphor Bronze Nozzles with Electroless Nickel Coating

Part Number	Gauge	Colour	ID (inch)	ID (mm)	OD (inch)	ID (mm)
IDMSPREC18-PB-EN	18	Pink	0.041	1.039	0.049	1.240
IDMSPREC19-PB-EN	19	Tan	0.034	0.859	0.042	1.059
IDMSPREC20-PB-EN	20	Green	0.027	0.681	0.035	0.879
IDMSPREC21-PB-EN	21	Light Blue	0.024	0.610	0.032	0.810
IDMSPREC23-PB-EN	23	Purple	0.022	0.564	0.025	0.635
IDMSPREC25-PB-EN	25	White	0.017	0.437	0.020	0.508
IDMSPREC27-PB-EN	27	Red	0.013	0.335	0.016	0.406
IDMSPREC30-PB-EN	30	Black	0.009	0.234	0.012	0.305

Phosphor Bronze Nozzles with Nickel PTFE Coating

Part Number	Gauge	Colour	ID (inch)	ID (mm)	OD (inch)	ID (mm)
IDMSPREC18-PB-PTFE	18	Pink	0.041	1.039	0.049	1.240
IDMSPREC19-PB-PTFE	19	Tan	0.034	0.859	0.042	1.059
IDMSPREC20-PB-PTFE	20	Green	0.027	0.681	0.035	0.879
IDMSPREC21-PB-PTFE	21	Light Blue	0.024	0.610	0.032	0.810
IDMSPREC23-PB-PTFE	23	Purple	0.022	0.564	0.025	0.635
IDMSPREC25-PB-PTFE	25	White	0.017	0.437	0.020	0.508
IDMSPREC27-PB-PTFE	27	Red	0.013	0.335	0.016	0.406
IDMSPREC30-PB-PTFE	30	Black	0.009	0.234	0.012	0.305



Micro Gauge

Nickel Silver Nozzles

Part Number	Size	Colour	ID (inch)	ID (mm)	OD (inch)	ID (mm)
IDMSPREC-M150-NS	150µ	Blue	0.006	0.159	0.010	0.244
IDMSPREC-M100-NS	100µ	Orange	0.004	0.108	0.008	0.208
IDMSPREC-M050-NS	50µ	Yellow	0.002	0.057	0.007	0.169

Preci-Tips Precision Dispensing Tips Packing Tube Nozzle Removal Instructions



Nozzles are individually packaged to prevent damage during transit. A nozzle tip cannot sustain damage by impact against sides of a packing tube. However, vibration or movement of a nozzle that is contained within a packing tube can sometimes result in lodging of a nozzle hub inside a packing tube lid.

No damage occurs to a nozzle **unless it is not dislodged** prior to opening a packing tube.



Image is a nozzle hub lodged inside lid of packing tube

If this is observed, tap bottom of tube against table surface to dislodge nozzle before packing tube is opened. This will ensure tip does not impact side of packing tube when opening lid.

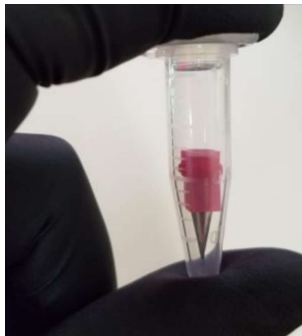


Image of nozzle seated correctly at bottom for removal from packing tube

Lid can now be opened to remove nozzle for use.